






Things to Know before Applying to the  
“Open Call for Makers”  
for Dublin Maker Festival

# What is in this document?

	<p>What is Dublin Maker Festival?</p> <p><b>Page 4</b></p>
	<p>When is Dublin Maker Festival?</p> <p><b>Page 7</b></p>
	<p>Where is Dublin Maker Festival?</p> <p><b>Page 8</b></p>



Getting to Leopardstown  
Racecourse

**Page 9**



Accessibility

**Page 11**



Find out more information

**Page 13**

# What is Dublin Maker Festival?



Dublin Maker Festival is a two-day **event**.

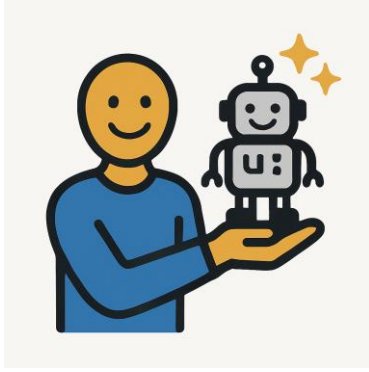
It is for people who like making things. It is also for people who want to see what others have made.



You don't have to pay to get into Dublin Maker Festival



People who have made or are making something will get a **table** and **chat** with people who come to look at their projects.



Right now, we are **looking for people** who have a project, or something they have made to **show** at Dublin Maker Festival.



We have a **form** for people who want to show something at Dublin Maker Festival

In the **form** we ask questions about:

- What your project is
- What kind of space you would like
- When you are available to be at the festival
- Who you are

You can find the form on this website:

<https://dublinmaker.ie/open-call/>



If you need help filling out the form, or if you want to talk to someone about your project, you can contact Amy.

Amy is the Dublin Maker Coordinator.

You can send her an email:  
[amy@dublinmaker.ie](mailto:amy@dublinmaker.ie)

Or you can call her: 086 33 85 962.

# When is Dublin Maker Festival?



Dublin Maker will take place on **August 30 and 31**, between **10 am – 6 pm**.

# Where is Dublin Maker Festival?



Dublin Maker will take place at:

**Leopardstown Racecourse,**

Carmanhall and  
Leopardstown

<https://g.co/kgs/TvhKh4X>



# How can I get to Leopardstown Racecourse?



## Public Transport:

Leopardstown Racecourse is a 20-minute walk from the S8 and 114 buses.

The Luas Red Line also goes to Leopardstown Racecourse. You have to get off at the “Central Park” stop and walk 20 minutes.

There is more information about public transport to Leopardstown Racecourse on our website

(<https://dublinmaker.ie/venue/>)



## Parking:

Leopardstown Racecourse has lots of free parking.

There are also wheelchair accessible spaces right outside the front entrance






We will have signs on the day that will show you where to go

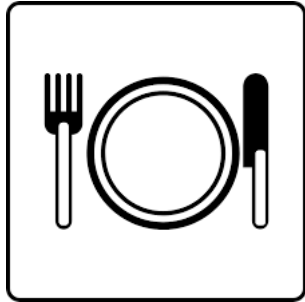


There is more information about travelling to Leopardstown Racecourse on our website

(<https://dublinmaker.ie/venue/>)

# Accessibility

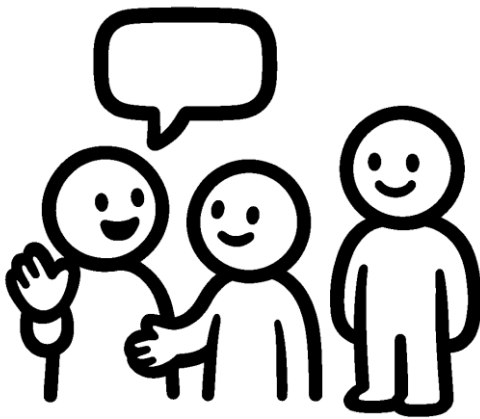
	<p>Leopardstown Racecourse is wheelchair accessible – for both manual and electric wheelchairs</p>
	<p>We will have lots of places to sit down and rest.</p>
	<p>There are accessible toilets at Leopardstown inside the main building and baby changing facilities.</p> <p>We will have signs showing where they are.</p>



There will be places where you can buy food at the festival.



There will also be a place where you can fill up a water bottle, for free.



Dublin Maker is very relaxed.

If you have a project, people may come up to talk to you when you are at your table.

But, if you are not at your table, you can talk to people if you like, or you can also just look around.

## Find out more information



There is more information about Dublin Maker on the internet

[www.dublinmaker.ie](http://www.dublinmaker.ie)



Dublin Maker Festival is also on lots of social media websites, like Facebook, Instagram and Twitter.

On social media we:

- Put up reminders about important dates
- Post information about the festival
- Show some of the projects and groups that will be at Dublin Maker.